

DOUBLE ENVELOPE SOLAR WALL



A. Thermal photograph of the solar wall at RiverEast

Description

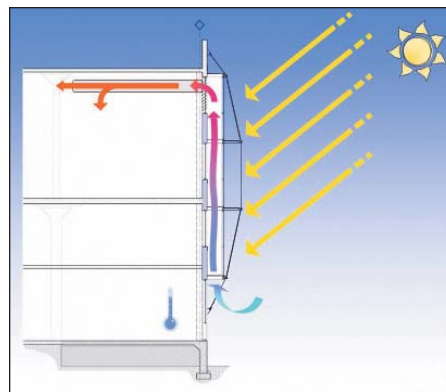
The thermal photograph (photo A.), taken by MEP contractor Interface Engineering in April 2007, is the solar wall at Group Mackenzie's RiverEast Center.

The image shows a 19 degree temperature difference between the exterior wall solar wall (47.7 F) and the interior wall (58.6 F).

The sealed chamber of glass panels captures solar heat (photo B.), which modulates the building's internal temperature.



C. Solar wall constructed.



B. Glass panels capture solar heat.